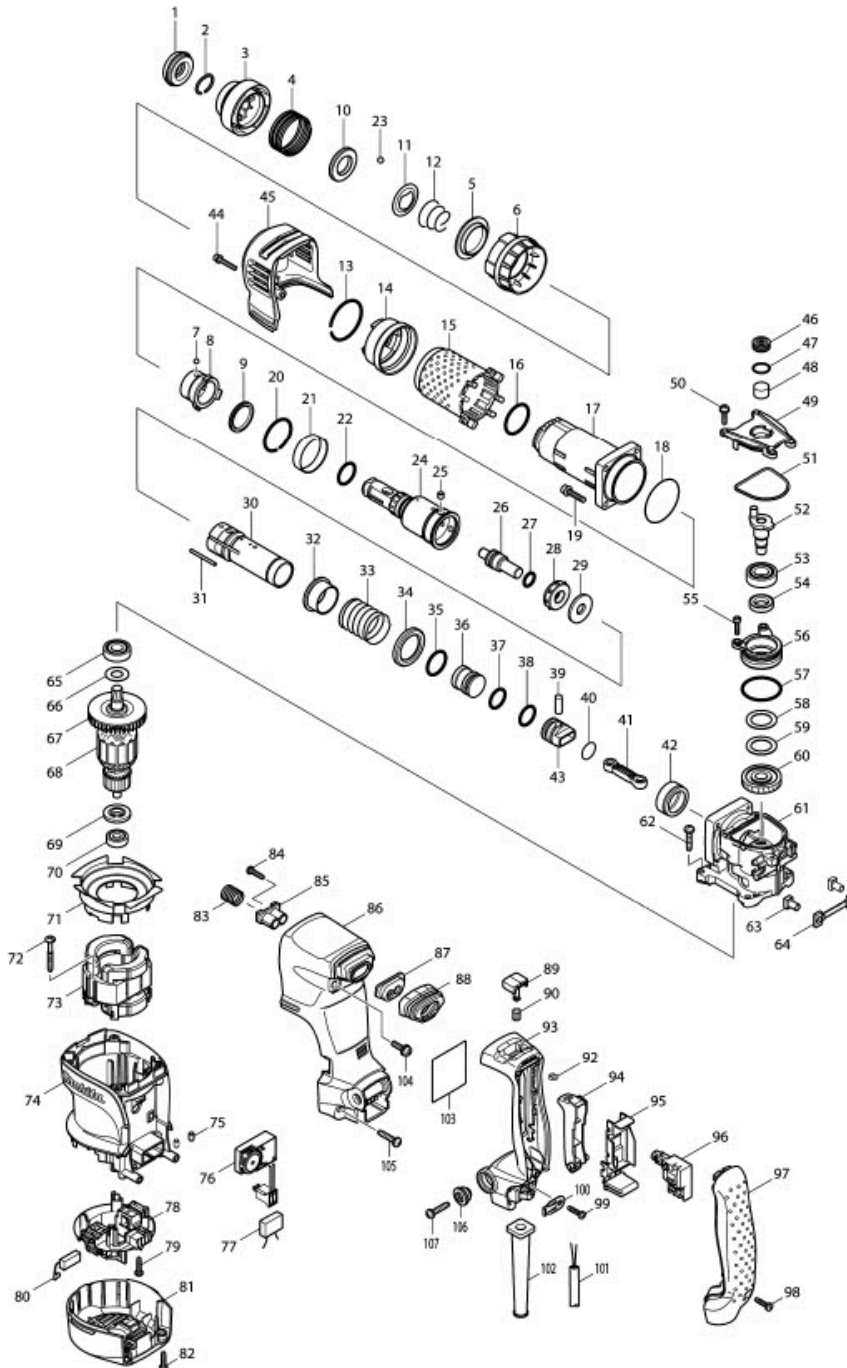


# Part Diagram

Model No.HK1820 POWER SCRAPER



## Part Diagram: HK1820 - Makita.my

Item	Sub	Parts No.	Parts Description	Qty
1		286283-8	CAP 38	1
2		233966-1	RING SPRING 19	1
3		450275-5	CHUCK COVER	1
4		234039-3	COMPRESSION SPRING 42	1
5		345874-5	STEEL BALL GUIDE	1
6		450274-7	CHANGE RING	1
7		216002-8	STEEL BALL 4.8	3
8		331796-5	RING 25	1
9		262142-0	URETHAN RING 26	1
10		257288-5	RING 21	1
11		345873-7	GUIDE WASHER	1
12		233916-6	CONICAL COMP. SPRING 21-29	1
13		231985-1	RING SPRING 43	1
14		450273-9	BARREL COVER SUPPORT	1
15		424066-0	BARREL COVER	1
16		213465-9	O RING 31	1
017-2		318196-6	BARREL	1
18		213606-7	O RING 48	1
19		922243-3	HEX. SOCKET HEAD BOLT M5X25	4
20		233956-4	RING SPRING 37	1
021-1		257296-6	RING 39	1
22		213008-7	O RING 22.4	1
23		216022-2	STEEL BALL 7.0	2
24		324837-4	TOOL HOLDER	1
025-1		268226-2	PIN 6	3
26		324844-7	IMPACT BOLT	1
27		213128-7	O RING 12	1
28		424065-2	RUBBER RING 13	1
29		267363-9	FLAT WASHER 12	1
030-1		331849-0	CYLINDER	1
031-1		256862-6	ROD 2.5	3
32		331799-9	RING 29	1
33		234041-6	COMPRESSION SPRING 32	1
34		345872-9	CUP WASHER 29	1
36		324847-1	STRIKER	1
37		213283-5	O-RING 18	1
38		213283-5	O-RING 18	1
39		256087-2	PIN 7	1
40		213262-3	O RING 18	1
41		450278-9	CONNECTING ROD	1
42		331797-3	SLEEVE 29	1
43		450298-3	PISTON	1
44		922148-7	HEX. SOCKET HEAD BOLT M4X25	1
45		450277-1	CRANK HOUSING COVER	1
46		419988-7	FILTER CAP	1
47		213218-6	O RING 16	1
48		443129-3	FILTER	1
49		450276-3	CRANK CAP	1
50		911133-5	PAN HEAD SCREW M4X18	4
51		424067-8	SEAL RING	1
52		324845-5	CRANK SHAFT	1
53		211232-6	BALL BEARING 6002LLU	1
54		213219-4	OIL SEAL 15	1
55		265490-6	HEX. SOCKET HEAD BOLT M4X16	2
56		318202-7	BEARING BOX	1
57		213513-4	O RING 39	1
58		267126-3	FLAT WASHER 22	1
59		267126-3	FLAT WASHER 22	1

## Part Diagram: HK1820 - Makita.my

Item	Sub	Parts No.	Parts Description	Qty
60		226675-9	HELICAL GEAR 36	1
061-1		158523-3	CRANK HOUSING COMPLETE	1
061-1	C10	213415-4	O RING 28	1
62		266041-8	TAPPING SCREW 5X25	4
63		331798-1	FIX GUIDE	2
64		424068-6	CUSHION PLATE	1
65		211131-2	BALL BEARING 6001DDW	1
66		253748-5	FLAT WASHER 12	1
67		241879-2	FAN 60	1
68		513743-0	ARMATURE ASS'Y 220-240V	1
68	D10		INC. 65-67,69,70	
69		681644-1	INSULATION WASHER	1
70		210005-4	BALL BEARING 608DDW	1
71		450265-8	BAFFLE PLATE	1
72		266211-9	TAPPING SCREW 5X40	2
73		625809-5	FIELD 240V	1
74		450263-2	MOTOR HOUSING	1
75		263002-9	RUBBER PIN 4	2
76		631780-3	CONTROLLER	1
78		638393-1	BRUSH HOLDER UNIT	1
79		265995-6	TAPPING SCREW 4X18	4
80		194160-9	CARBON BRUSH CB-350	1
81		450264-0	REAR COVER	1
82		265995-6	TAPPING SCREW 4X18	2
83		234022-0	COMPRESSION SPRING 14	1
84		265995-6	TAPPING SCREW 4X18	2
85		450280-2	SPRING GUIDE	1
86		450272-1	HANDLE BASE	1
87		450279-7	DUST COVER SUPPORT	1
88		424069-4	DUST COVER	1
89		450271-3	LOCK ON BUTTON	1
90		234040-8	COMPRESSION SPRING 8	1
92		961011-9	STOP RING E-4	1
93		188495-8	HANDLE SET	1
94		450269-0	SWITCH LEVER	1
95		158522-5	SWITCH HOLDER COMPLETE	1
96		650597-5	SWITCH TG71BS-1	1
97		450267-4	HANDLE COVER	1
98		265995-6	TAPPING SCREW 4X18	1
99		265995-6	TAPPING SCREW 4X18	1
100		687169-3	STRAIN RELIEF	1
101		692541-6	POWER SUPPLY CORD 1.00-2-5.0	1
102		682573-1	CORD GUARD 10	1
103		864601-6	HK1820 NAME PLATE	1
104		911234-9	PAN HEAD SCREW M5X20	2
105		266041-8	TAPPING SCREW 5X25	2
106		313139-3	SHOULDER SLEEVE 6	2
106-1		459895-2	SHOULDER SLEEVE 6	2
107		266041-8	TAPPING SCREW 5X25	2
109		213142-3	O-RING 35	1
A01		158024-1	HOOK COMPLETE	1
A02		824789-4	PLASTIC CARRYING CASE	1
A02	C10	324207-7	SHAFT	1
A02	C20	417724-5	LATCH	2
A02	C30	419216-0	HANDLE	1
A03		806524-2	HK1820 PLASTIC CASE LABEL	1
B01		195194-5	HAMMER SERVICE KIT SET	1
B01	C10	181490-7	HAMMER GREASE 30G	1
B01	D10		INC. 1,9,23,27,28,37,38,80	

